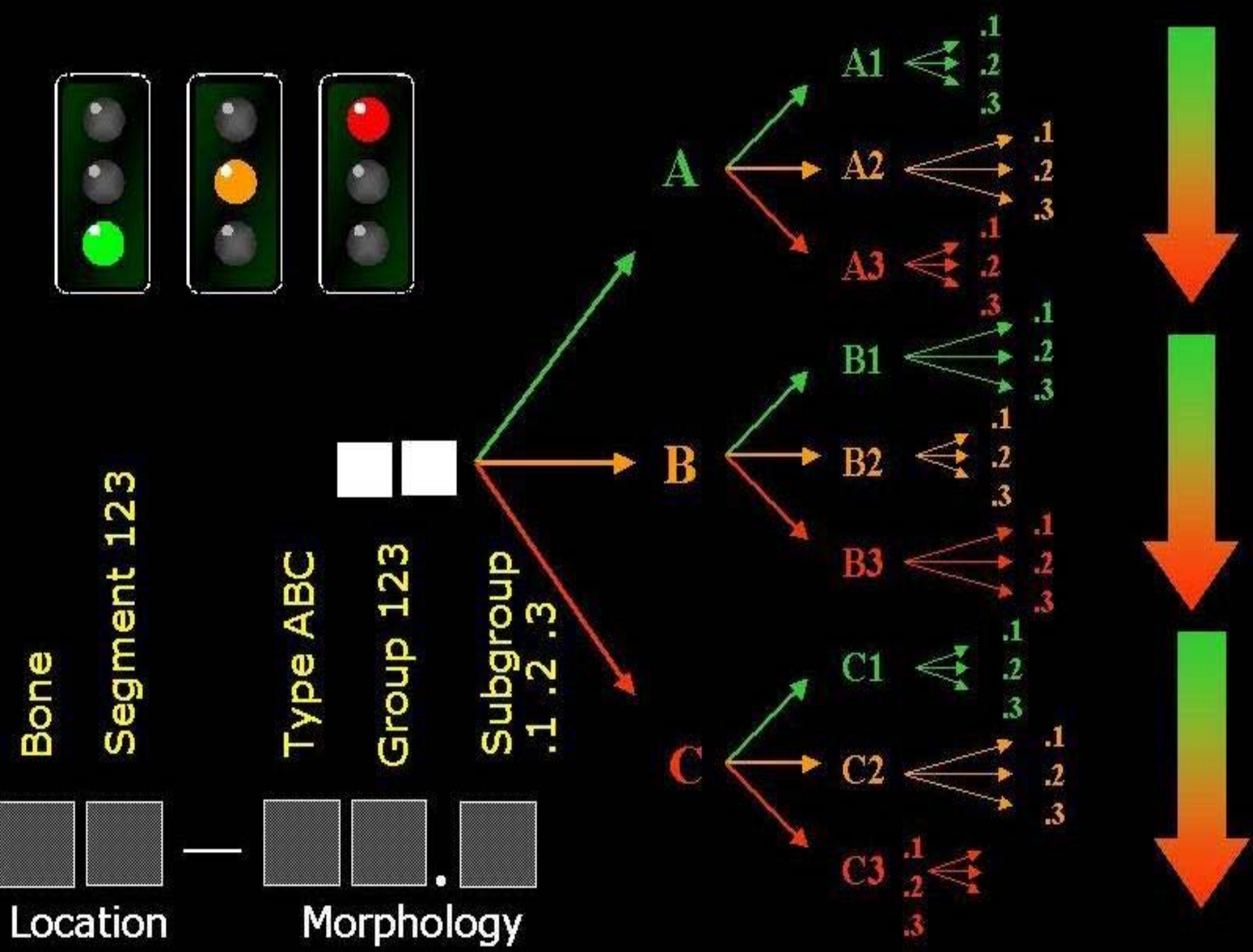
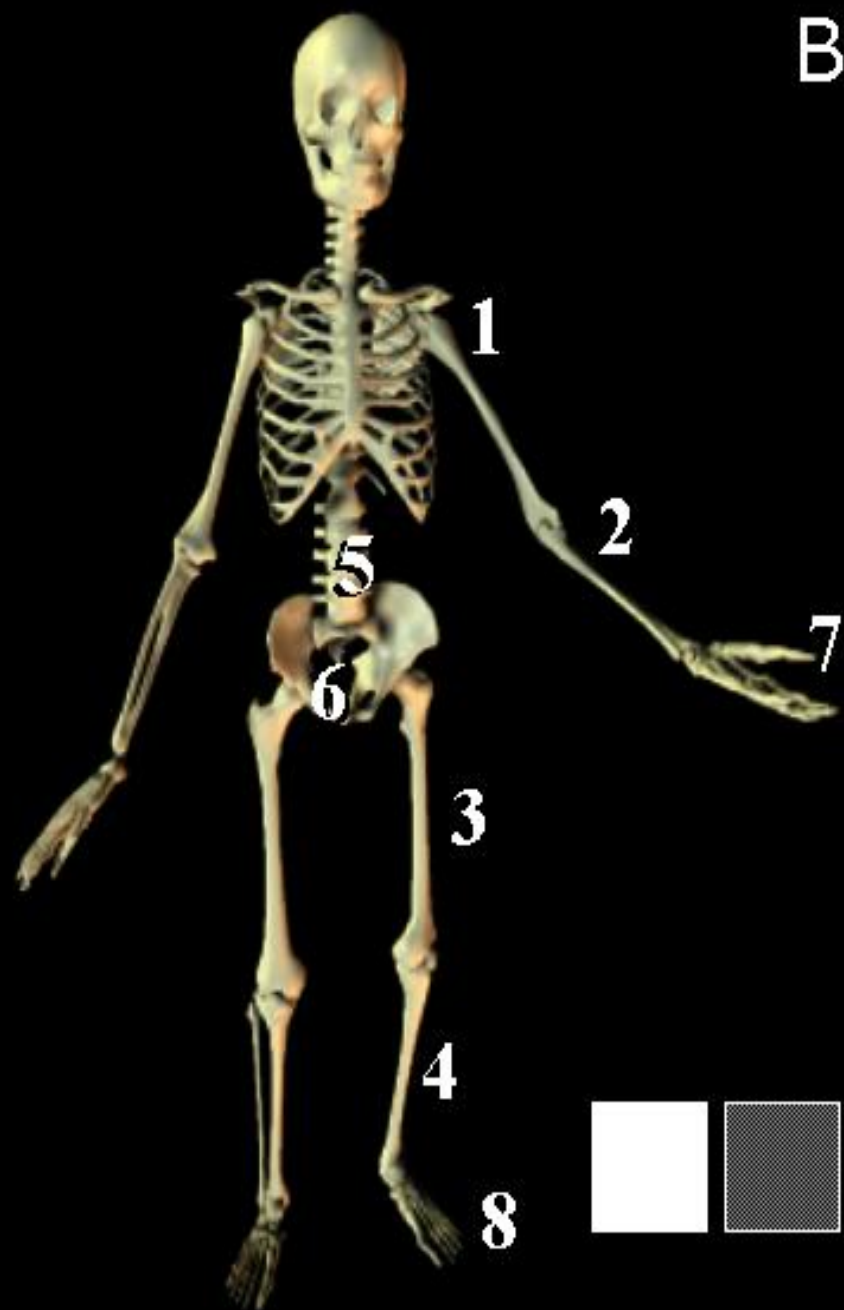


A0骨折分类

WWW.GKQCW.COM



Bone codes



also...

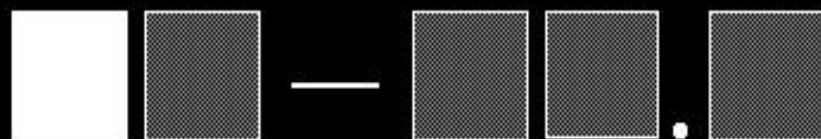
91.1 patella

91.2 clavicle

91.3 scapula

92 mandible

93 cranio-facial bones





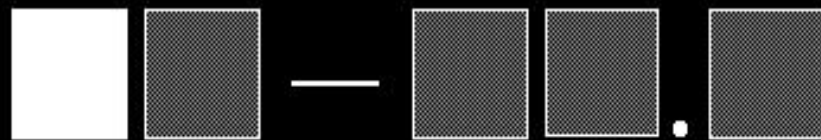
Bones

1

2

3

4



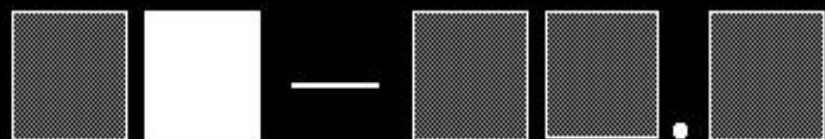
Segments

1

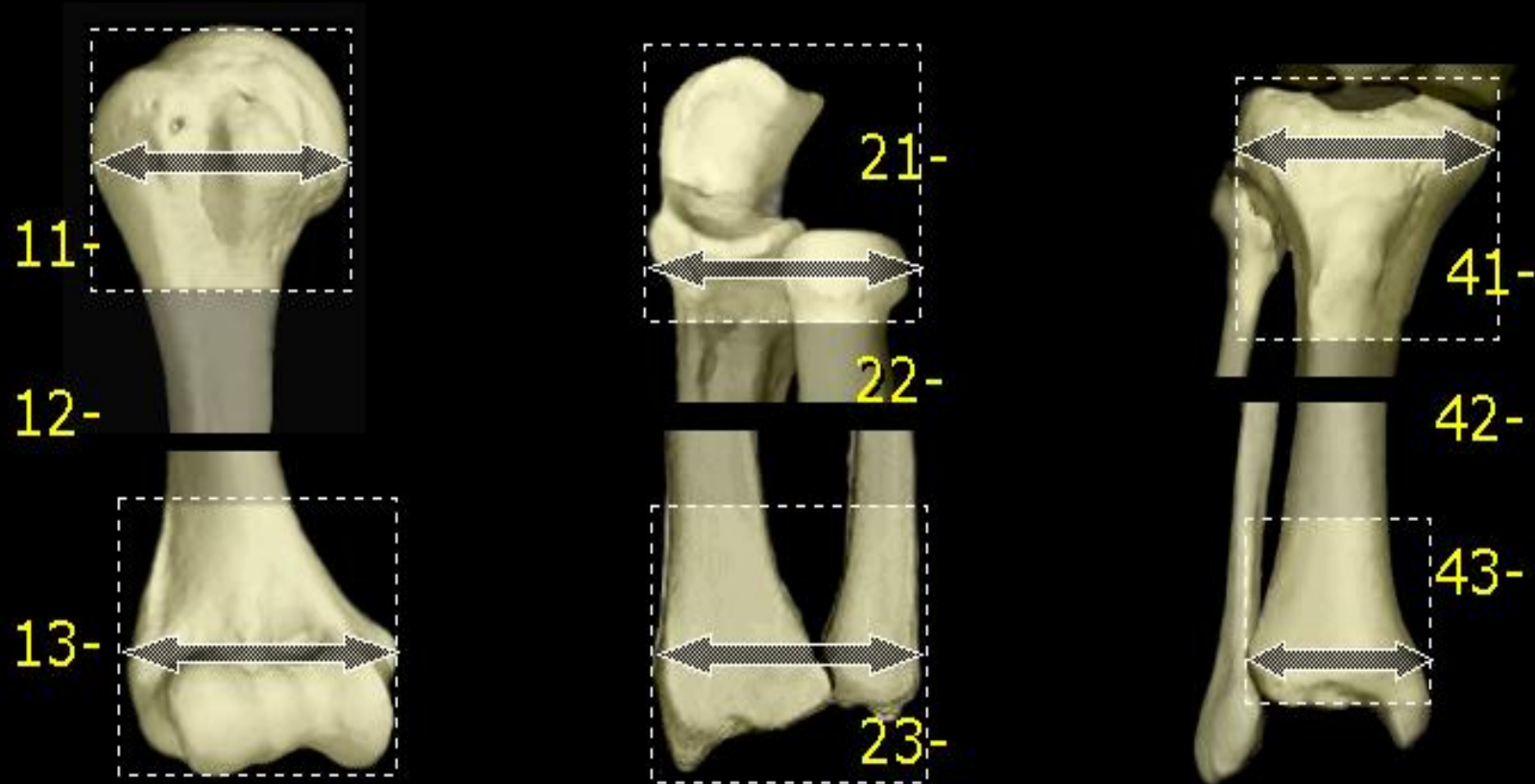


2

3



The metaphyseal segments are defined by a square whose sides are as long as the maximum diameter of the epiphysis



Exceptions are:

Proximal femur-

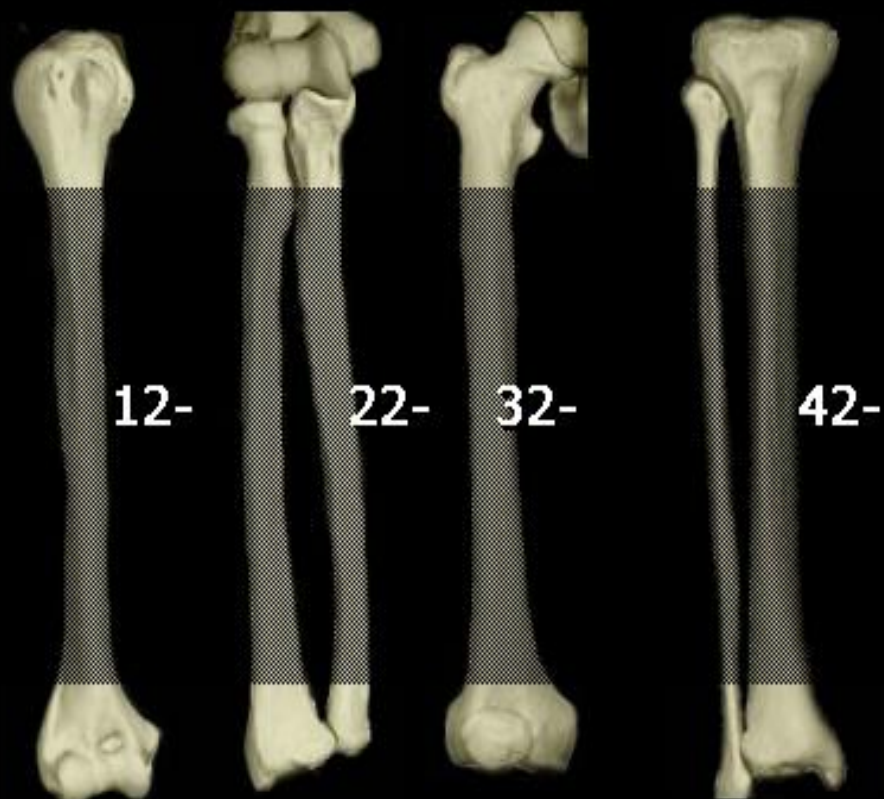


proximal to a line at the inferior level of lesser trochanter

represented as segment 44.

The malleoli are \therefore not included in segment 43

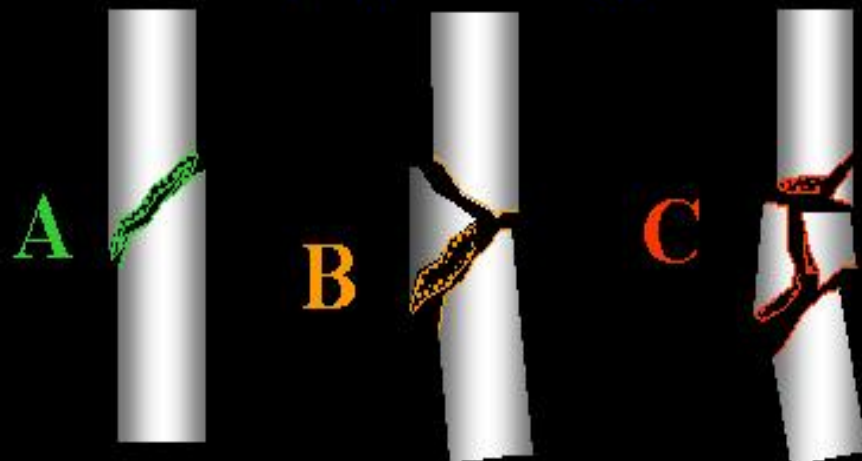
Diaphyseal types



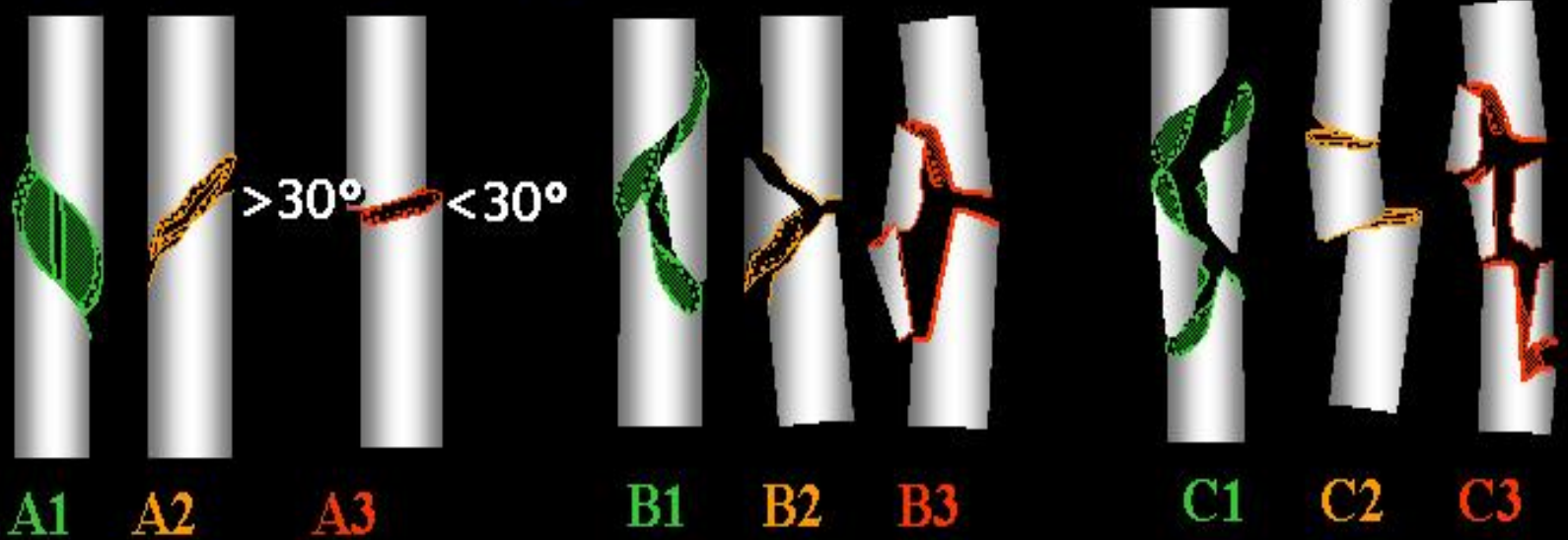
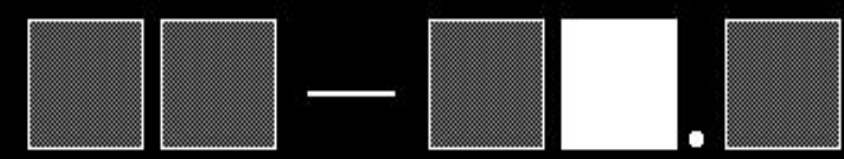
12
22
32
42



Diaphyseal types

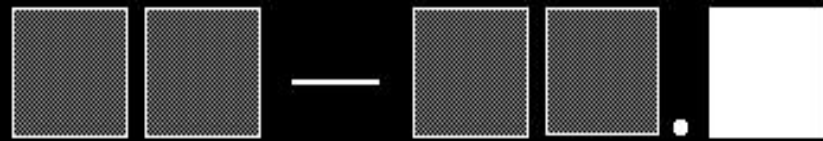


Diaphyseal groups





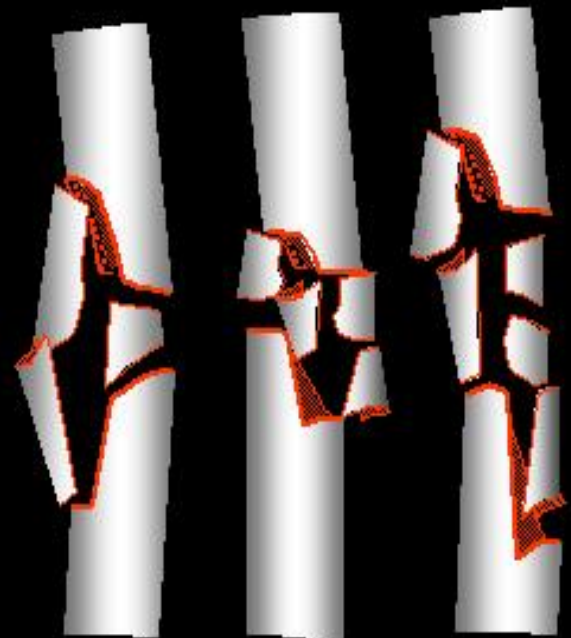
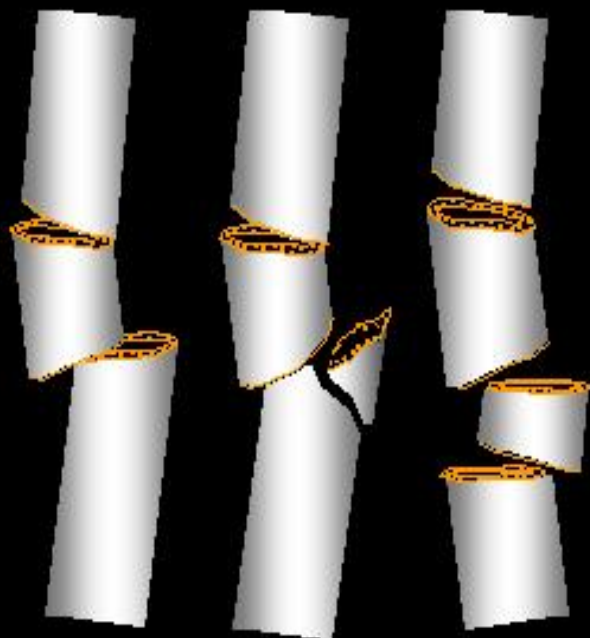
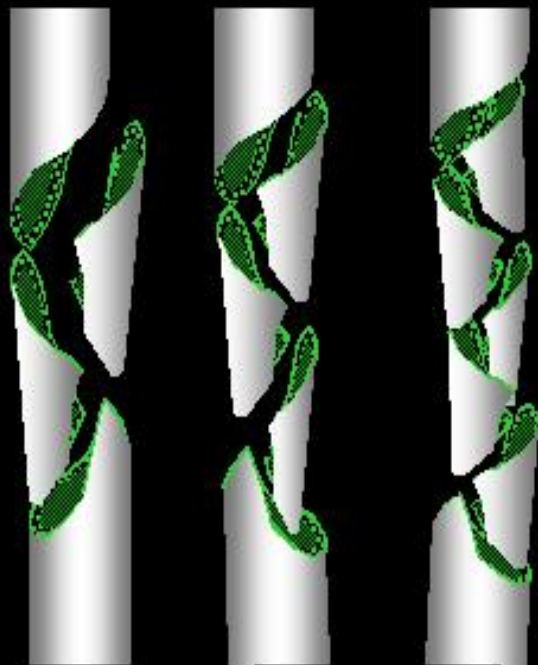
Subgroups .1 .2 .3 of
diaphyseal groups C1 C2 C3



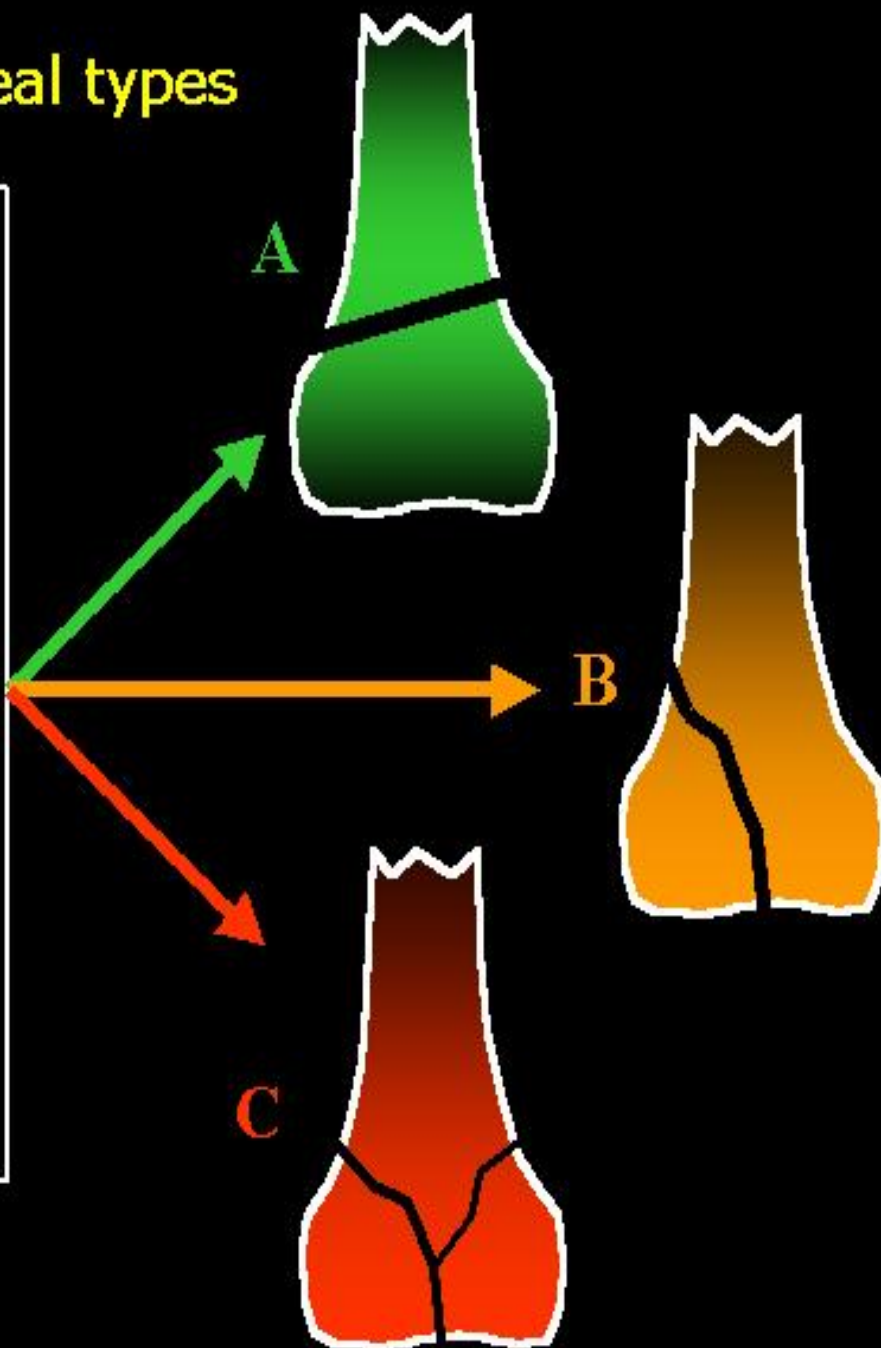
C1
.1 .2 .3

C2
.1 .2 .3

C3
.1 .2 .3



Metaphyseal/epiphyseal types





A



A1



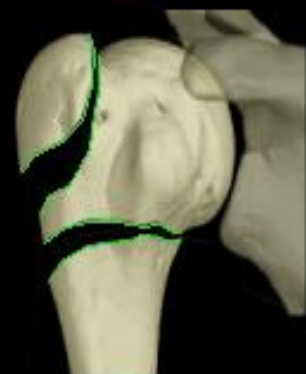
A2



A3



B



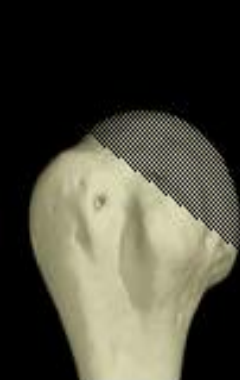
B1



B2



B3



C



C1



C2



C3



A1



B1



C1



A2



B2



C2



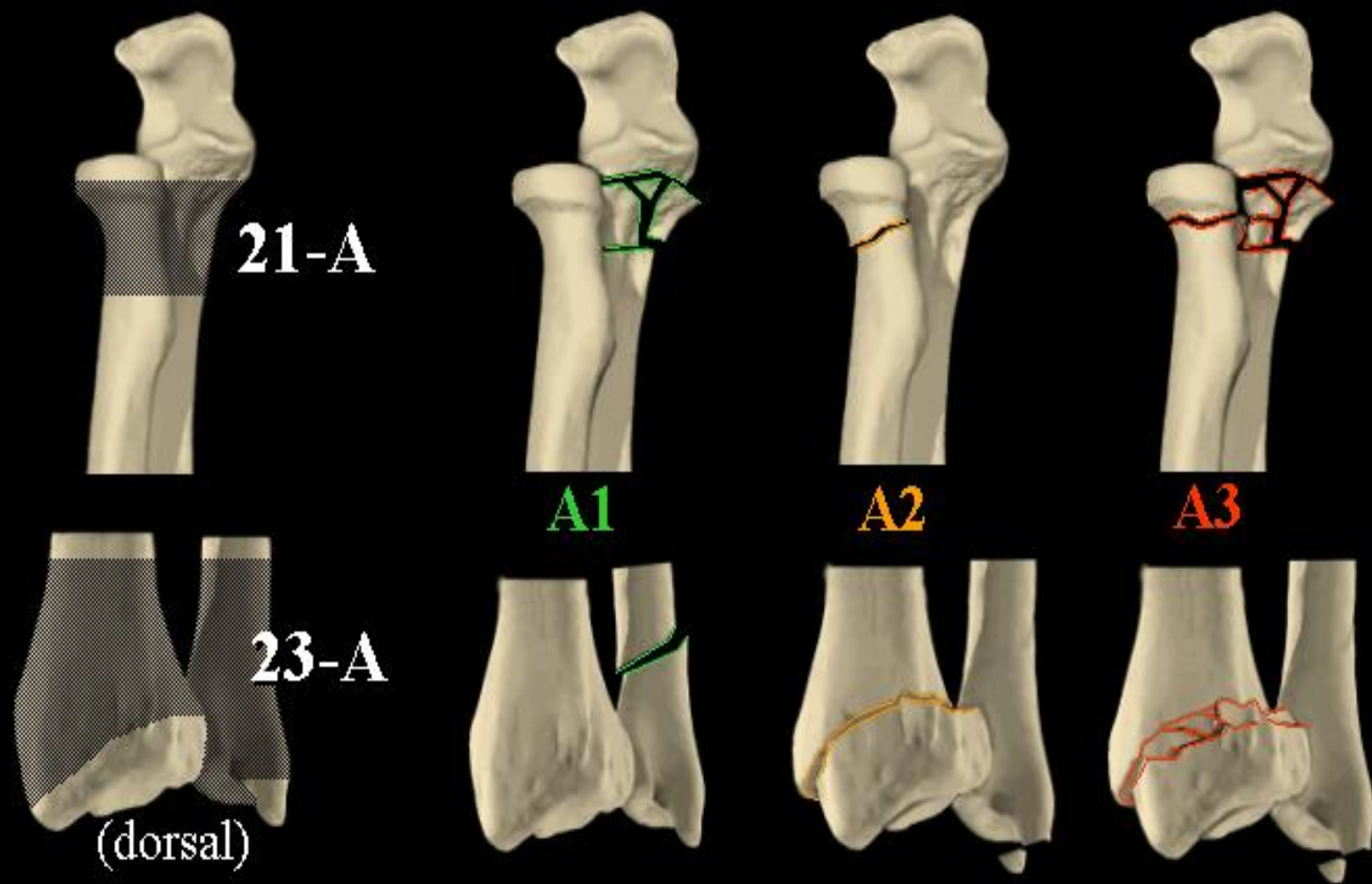
A3



B3



C3

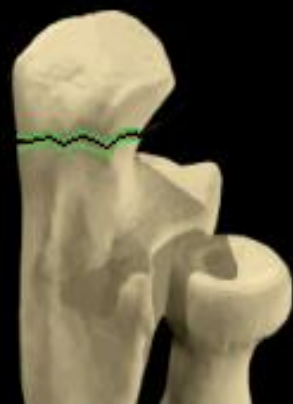




21-B



23-B



B1



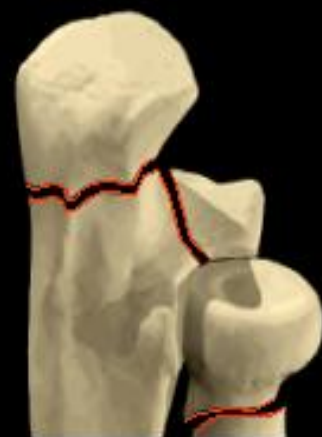
B1



B2



B2



B3



B3



21-C



C1



C2



C3



23-C



C1



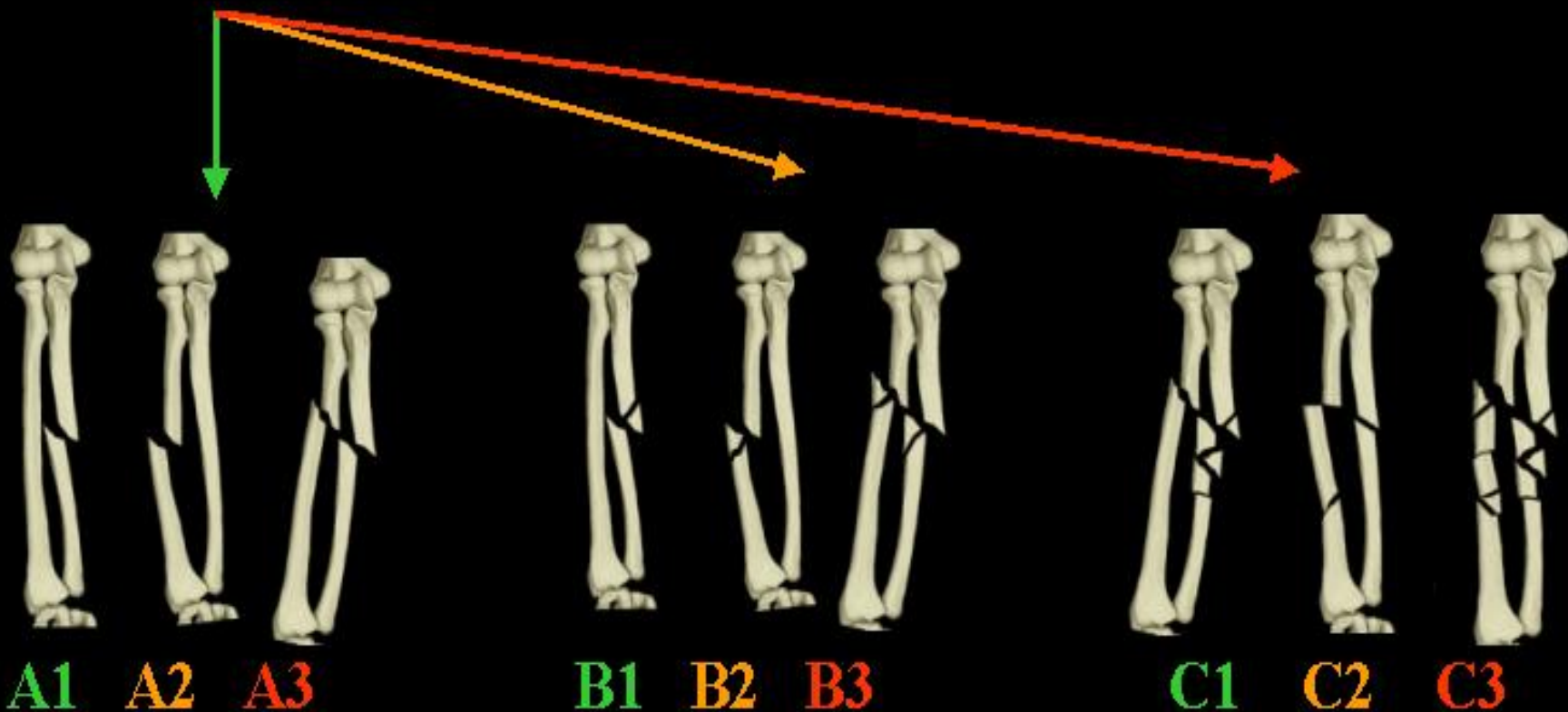
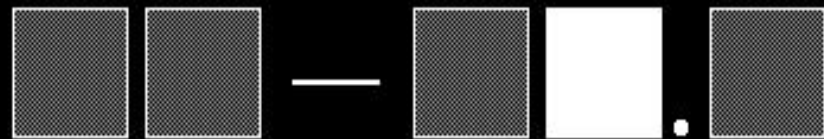
C2



C3

Diaphyseal groups forearm

22-

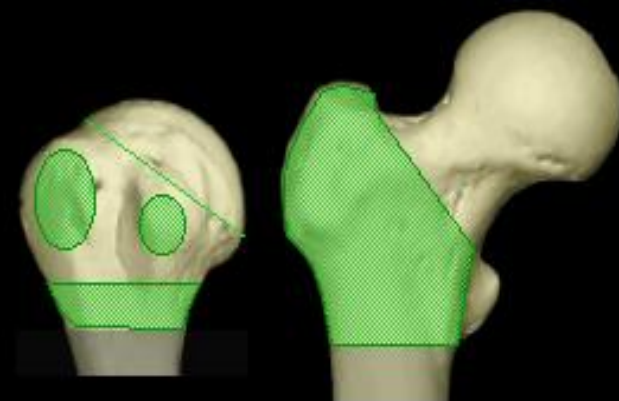
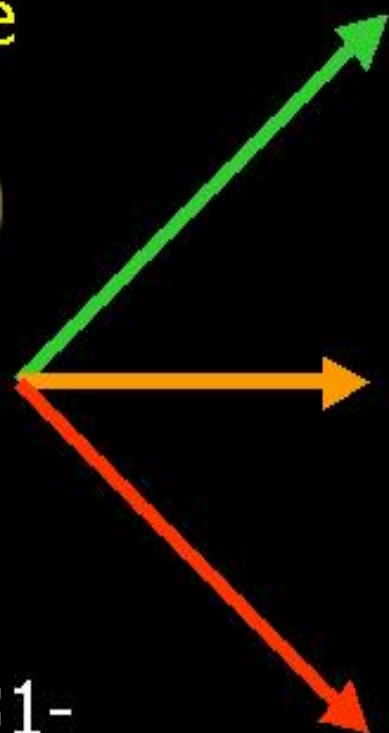


Humerus proximal 11-

A Extra-articular unifocal fracture

B Extra-articular bifocal fracture

C Articular fracture



B



C

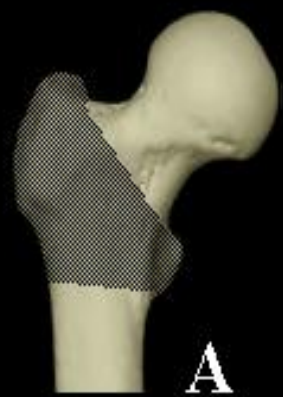


Femur proximal 31-

A Trochanteric area fracture

B Neck fracture

C Head fracture





33A



A1



A2



A3



41A



A1



A2



A3



43A



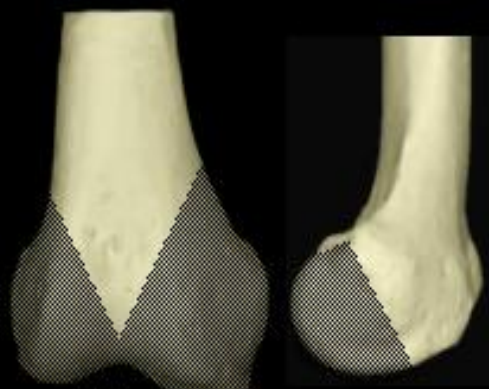
A1



A2



A3



33-B



B1



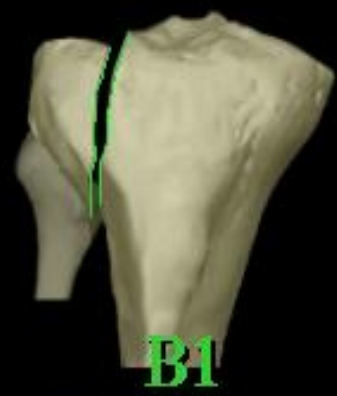
B2



B3



41-B



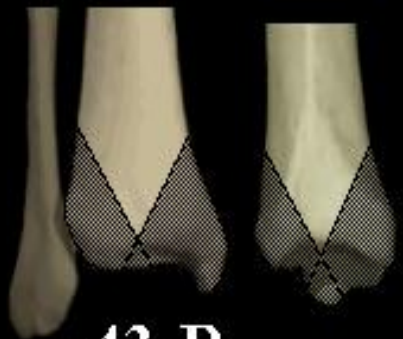
B1



B2



B3



43-B



B1



B2



B3



33-C



C1



C2



C3



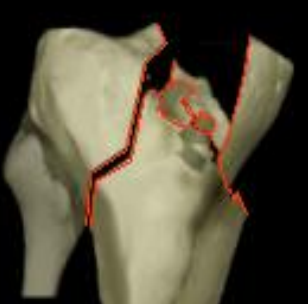
41-C



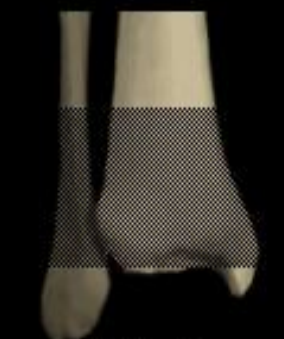
C1



C2



C3



43-C



C1



C2



C3

